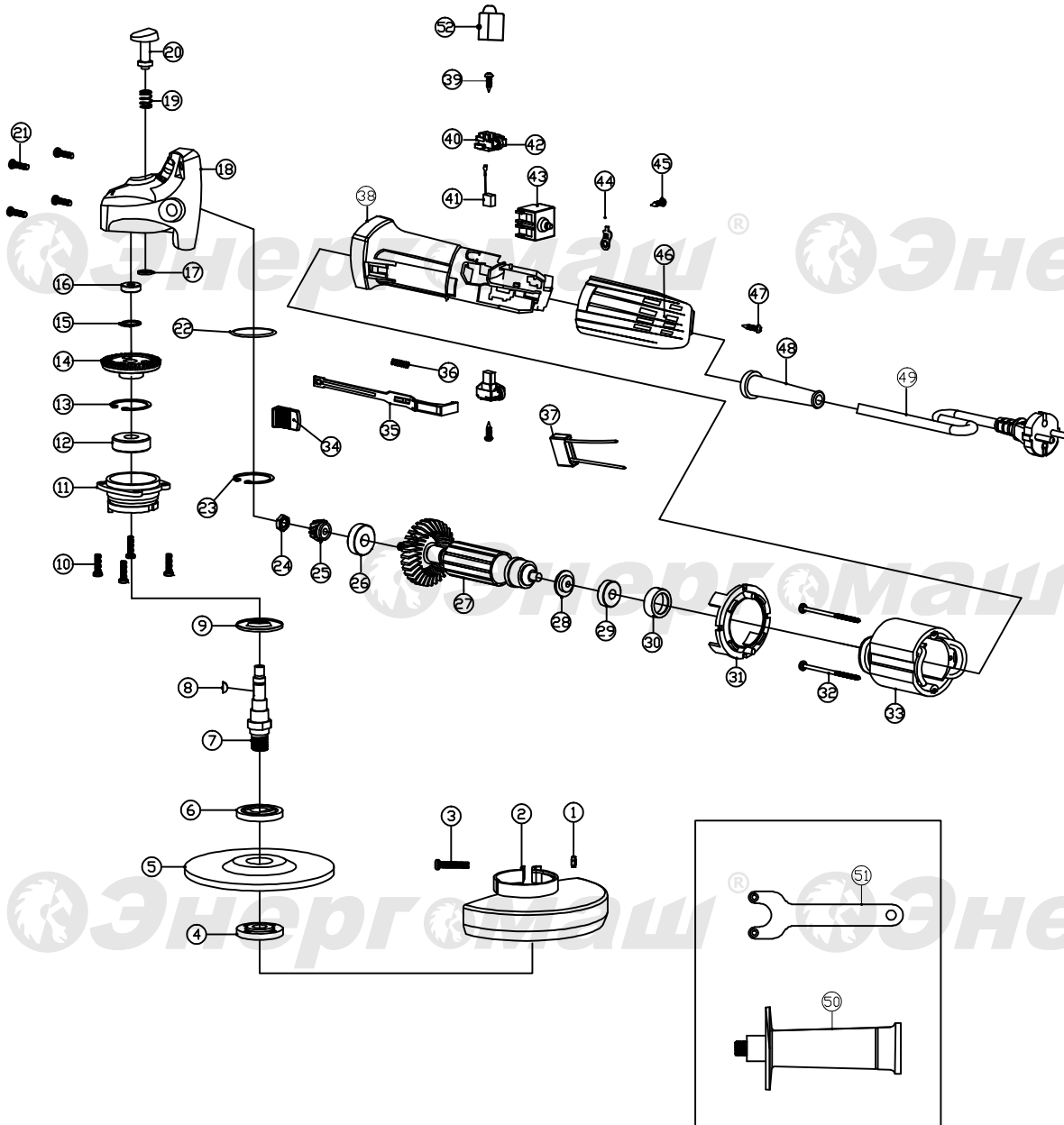


## УШМ-125Р



NO	DESCRIPTION	NO	DESCRIPTION
1	NUT M5	27	ROTOR
2	WHEEL GUARD	28	RING
3	M5X25 SCREW	29	BEARING 607
4	DOWN PLATE	30	BEARING BUSH
5	GRINDING WHEEL	31	FAN RING
6	UP PLATE	32	SCREW ST4X65
7	OUTPUT SHAFT	33	STATOR
8	WOODRUFF KEY 3X10	34	SWITCH BUTTON
9	DUST COVER	35	SWITCH BAR
10	SCREW M4X14	36	SPRING
11	FRONT COVER	37	CAPACITANCE
12	BEARING 6201	38	HOUSING
13	RING Ø32	39	SCREW ST3X10
14	BIG GEAR	40	BRUSH HOLDER
15	RING Ø12	41	CARBON BRUSH
16	BEARING 696	42	SPRING
17	OPEN CARD	43	SWITCH
18	GEARBOX	44	PRESSING PLATE
19	SPRING	45	SCREW BT4X12
20	SELF-LOCK	46	BACK COVER
21	SCREWB T4X25	47	SCREW BT4X12
22	RING	48	PROTECT SLEEVE
23	INSIDE CARD	49	CABLE
24	NUT M6	50	SIDE HANDLE
25	SMALL GEAR	51	WRENCH
26	BEARING 629	52	SPEED CONTROLLER

USM-125R-EX-RU240325-4